

Enterprise Information System Services

Managing GroupWise Internet Agent SMTP ACLs

These procedures apply to the **GWIASMTP0** and **GWIASMTP5** GroupWise Internet Agents (GWIA). These two agents respond to SMTP requests to the “mail.mcg.edu” service.

The agent ACLs for the **GWIASMTP2**, **GWIASMTP3**, **ESPIGWIA1**, and **ESPIGWIA2** GWIAs should not be modified using this procedure.

Any server or service is required to meet a minimum set of prerequisites before an ACL entry can be implemented:

The sending host, service, or device must have:

- Verified static or reserved DHCP IP address
- Fully Qualified Email Address (FQEA)
- Recipient information (internal, external or both)

GroupWise SMTP ACL concepts

There are two types of ACLs applied to ITSS managed GWIAs.

- **Connection**
 - These are source IP network address entries
- **Relay exceptions**
 - These are source IP network address entries and target addresses or expressions
 - These are source email address entries and target addresses or expressions

A server or service must have a connection exception to successfully connect to the mail.mcg.edu service. For most cases this entry will be sufficient to allow the sending service to send email to internal recipients successfully. However if the sending host or the recipient is outside of the “georgiahealth.edu” domain a relay exception entry may be required as well.

Use the following tables to determine if a relay exception is required and if so what type of exception to use.

Relay Exception: None (for internal delivery when relay config is not required)

From	To	GWIA Relays	SMS Delivers
<Any known iDomain>	<Foreign Domain>	NO	N/A
<Foreign Domain>	<Any known iDomain>	YES	N/A
<Any known iDomain>	<Any known iDomain>	YES	N/A
<Foreign Domain>	<Foreign Domain>	NO	N/A

Relay Exception: “georgiahealth.edu” (for internal delivery when relay config is required)

From	To	GWIA Relays	SMS Delivers
<Any known iDomain>	<Foreign Domain>	NO	N/A
<Foreign Domain>	<Any known iDomain>	YES	N/A
<Any known iDomain>	<Any known iDomain>	YES	N/A
<Foreign Domain>	<Foreign Domain>	NO	N/A

Relay Exception: “*” (for external delivery)

From	To	GWIA Relays	SMS Delivers
<Any known iDomain>	<Foreign Domain>	YES	YES
<Foreign Domain>	<Any known iDomain>	YES	N/A
<Any known iDomain>	<Any known iDomain>	YES	N/A
<Foreign Domain>	<Foreign Domain>	YES	NO

Configuring a connection ACL entry

1. Reference the following files to ensure the ACL entries are not already in place:

For Connection ACL entries:

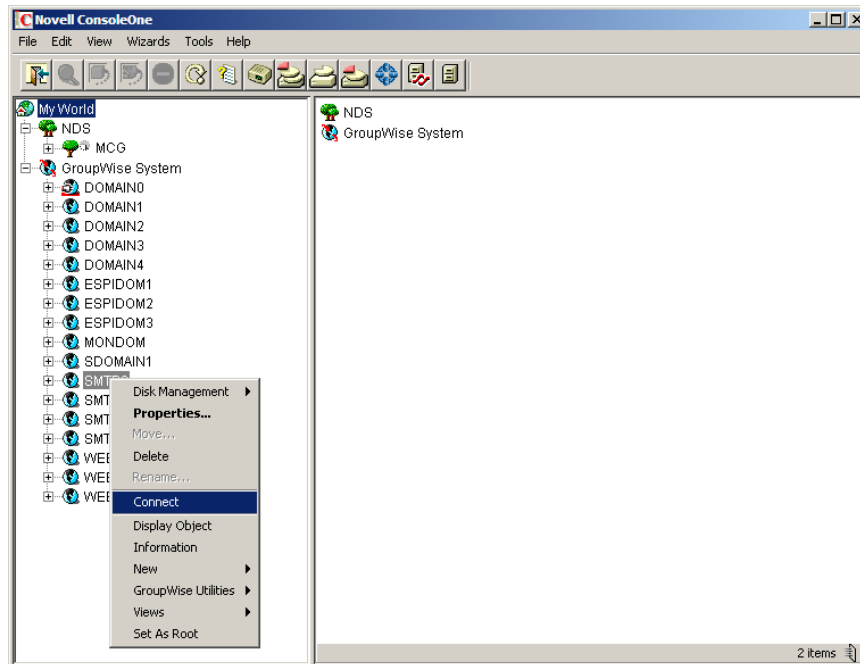
\\NET3\ITSS\SERVADMN\Documentation\GroupWise\SMTP\ACL\SMTP0-5 Relay Exception ACL.txt

For Relay Exceptions:

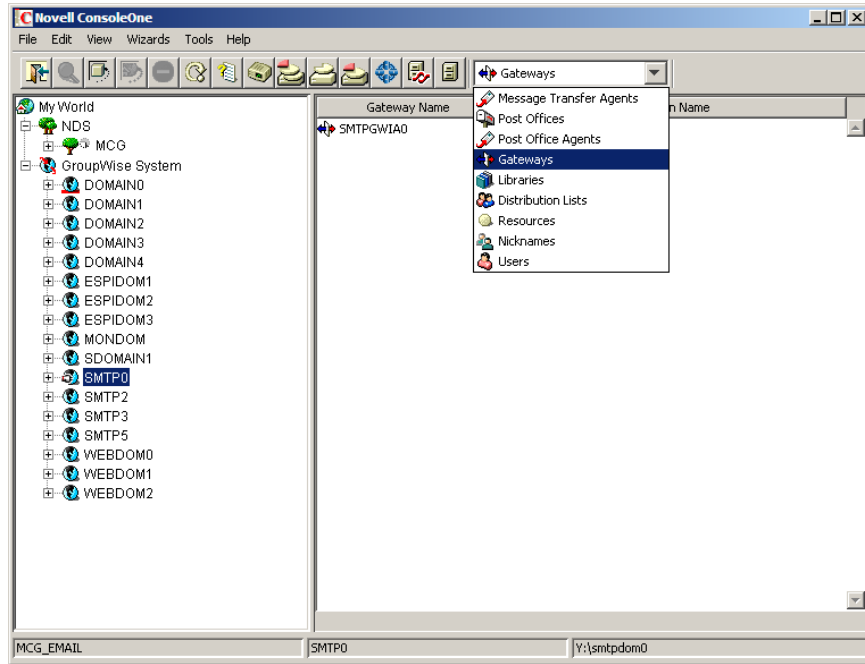
\\NET3\ITSS\SERVADMN\Documentation\GroupWise\SMTP\ACL\SMTP0-5 Connection ACL.txt

If the exception(s) do not exist please add them in the appropriate sections of the file(s)

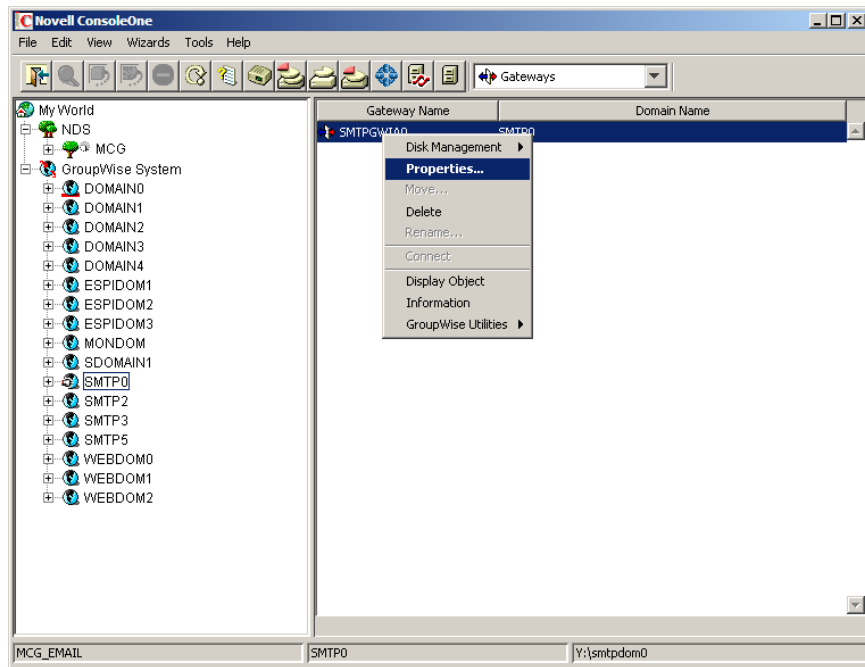
2. Using the appropriate version of ConsoleOne and the GroupWise Administration snapins connect to the **SMTP0** domain:



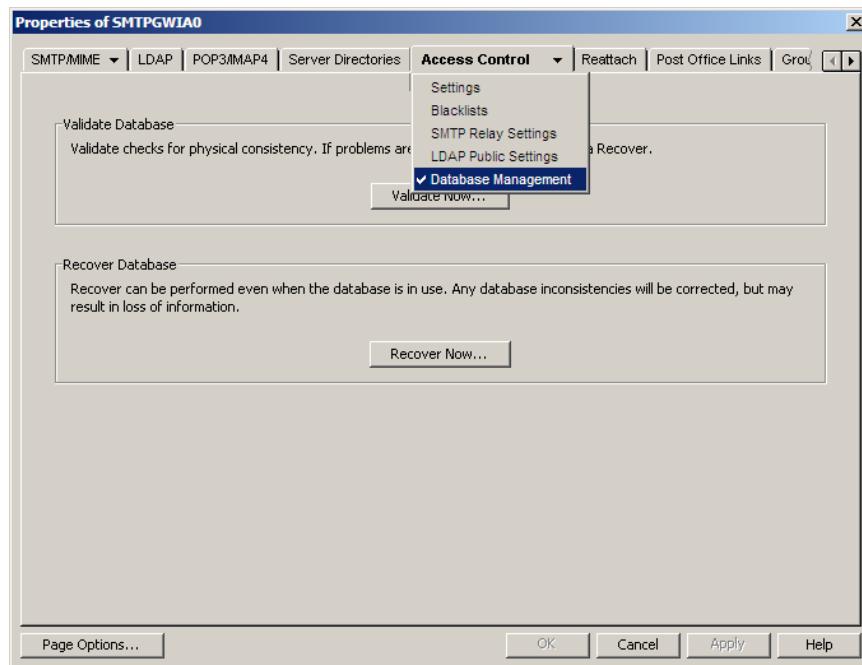
3. Select “**Gateways**” from the object filter dropdown box:



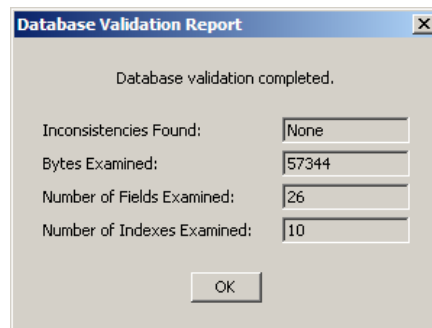
4. Edit the properties of the **SMTPGWIA0** gateway:



5. Select the “**Access Control**” tab and choose the “**Database Management**” option from the dropdown:



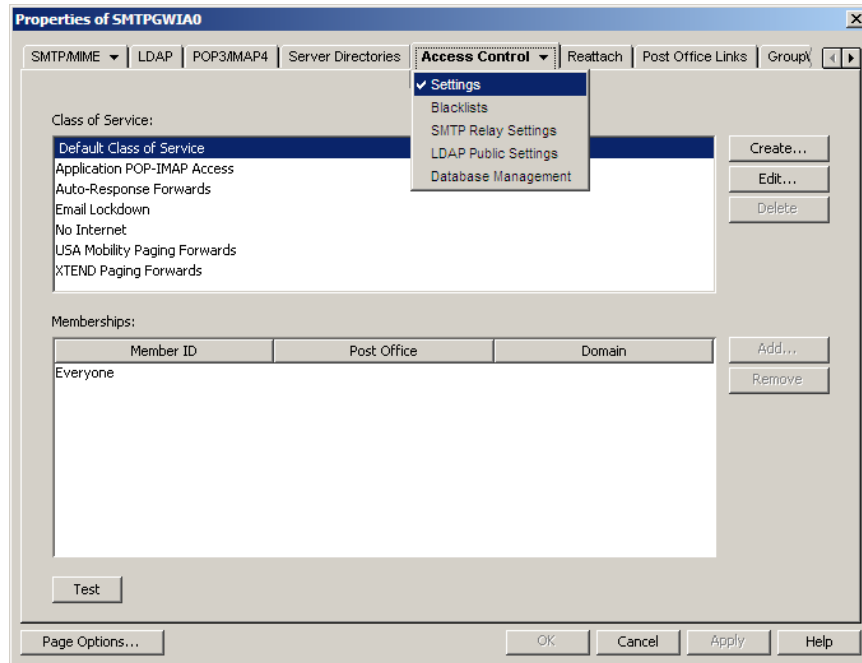
6. Click the “**Validate Now**” button. The resultant report should display the metrics of the database validation as shown below:



Click “**OK**” to close the “**Database Validation Report**” dialog

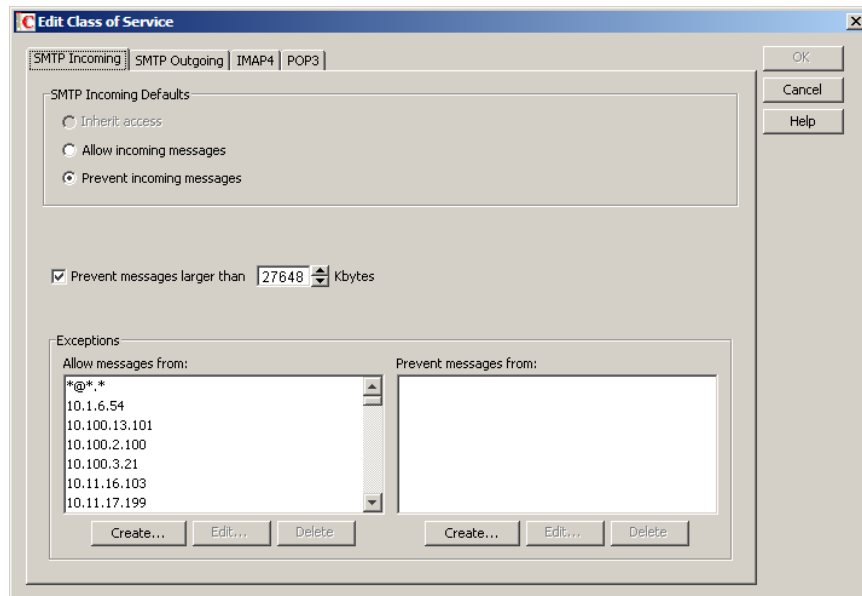
If the report displays “0” values the connection to the database is suspect and changes should not be attempted. Steps 1-5 should be repeated until a good connection to the database is obtained before proceeding.

7. Select the **“Access Control”** tab and choose the **“Settings”** option from the dropdown:

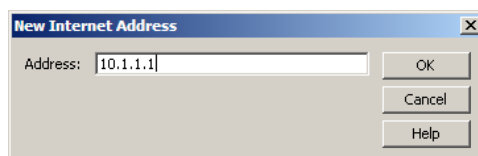


Ensure the **“Default Class of Service”** is selected and click the **“Edit”** button.

8. Click the **“Create”** button in the **“Allow messages from:”** field of the **“Exceptions”** section



Add the network address of the server, service, or device being added to the connection ACL to the **“New Internet Address”** dialog and click **“OK”**



9. Click **“OK”** on the **“Class of Service”** and then the **“Properties of SMTPGWIA0”** dialogs
10. Restart the SMTPGWIA0 agent using the following commands at the host server console as the root user:

```
rcgrpwise stop SMTPGWIA0.SMTP0
rcgrpwise start SMTPGWIA0.SMTP0
```

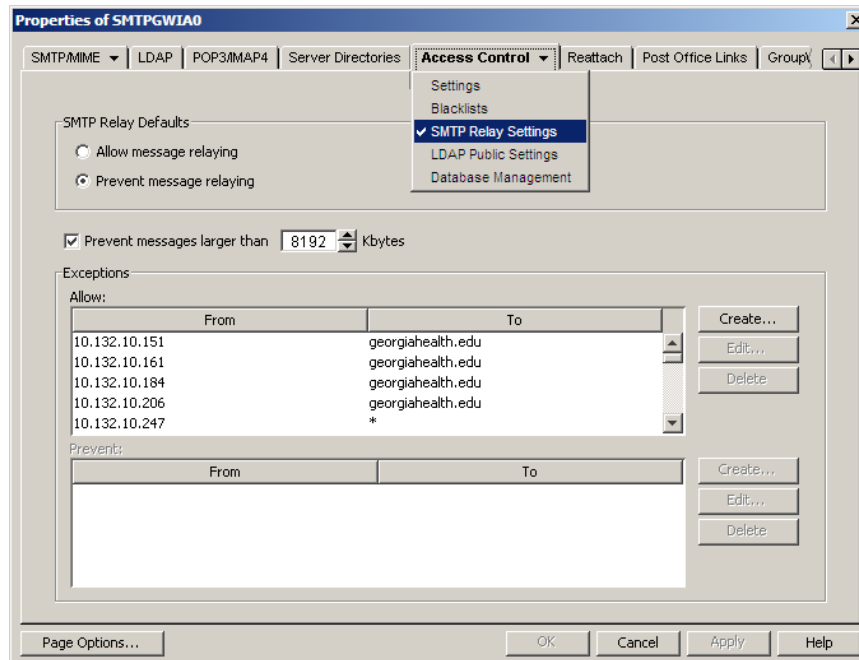
```
smtp0.mcg.edu - PuTTY
L8:/home/LCK # rcgrpwise status
Checking status [PO9.DOMAIN1]      unused
Checking status [DOMAIN0]         unused
Checking status [SDOMAIN1]        unused
Checking status [SMTP0]           running
Checking status [SMTPGWIA0.SMTP0]  running
Checking status [SMTP2]           unused
Checking status [SMTPGWIA2.SMTP2]  unused
Checking status [SMTP3]           unused
Checking status [SMTPGWIA3.SMTP3]  unused
Checking status [SMTP5]           unused
Checking status [SMTPGWIA5.SMTP5]  unused
L8:/home/LCK # rcgrpwise stop SMTPGWIA0.SMTP0
Shutting down                      done
L8:/home/LCK # rcgrpwise start SMTPGWIA0.SMTP0
Starting                            done
L8:/home/LCK # █
```

Configuring a relay exception ACL entry

1. Ensure there is a connection ACL entry in place by following steps 1 - 9 of the previous section. However do not click **“OK”** for the **“Properties of SMTPGWIA0”** dialog.

Also be sure to determine the type of relay exception needed using the tables on page 1

2. With the **“Properties of SMTPGWIA0”** dialog open select the **“Access Control”** tab and choose the **“SMTP Relay Settings”** option from the dropdown:



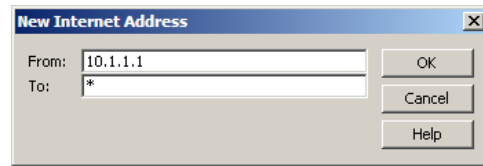
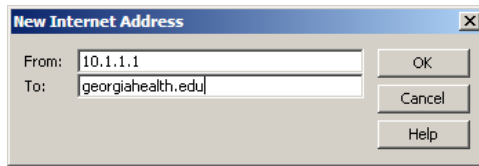
3. Click the **“Create”** button in the **“Allow”** field of the **“Exceptions”** section

4. Configure either a relay configuration for internal or external recipients

For delivery to internal recipients

or

For delivery to external recipients



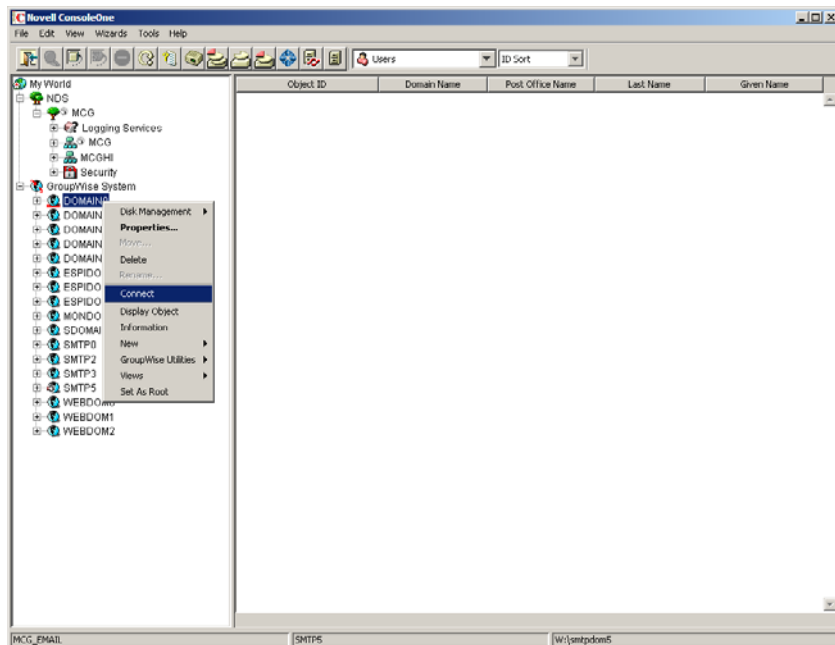
- Click "OK" on the "New Internet Address" and the "Properties of SMTPGWIA0" dialogs
- Restart the SMTPGWIA0 agent using the following commands as root on the host server:

```
rcgrpwise stop SMTPGWIA0.SMTP0
rcgrpwise start SMTPGWIA0.SMTP0
```

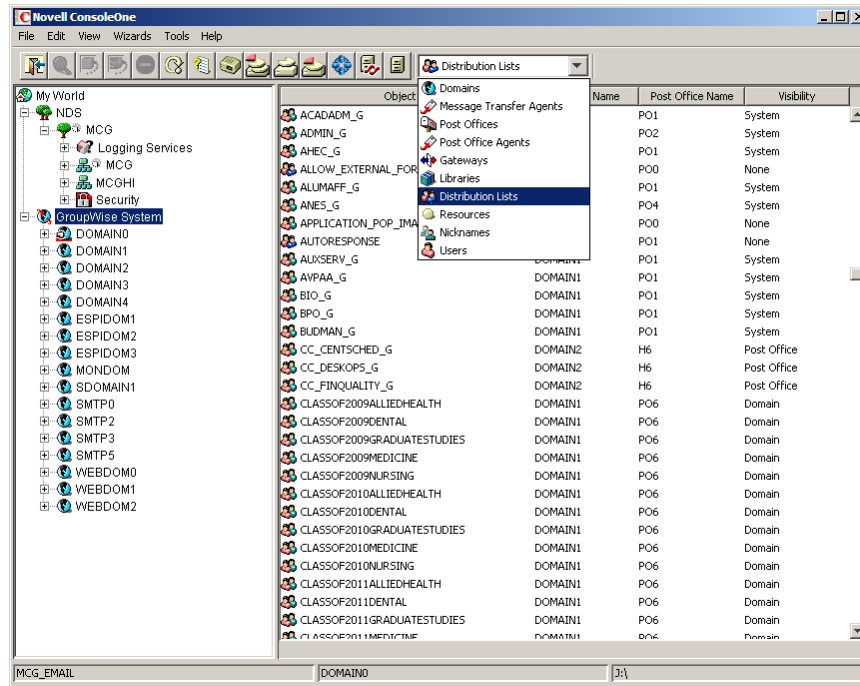
```
smtp0.mcg.edu - PuTTY
L8:/home/LCK # rcgrpwise status
Checking status [PO9.DOMAIN1]          unused
Checking status [DOMAIN0]             unused
Checking status [SDOMAIN1]            unused
Checking status [SMTP0]                running
Checking status [SMTPGWIA0.SMTP0]     running
Checking status [SMTP2]                unused
Checking status [SMTPGWIA2.SMTP2]     unused
Checking status [SMTP3]                unused
Checking status [SMTPGWIA3.SMTP3]     unused
Checking status [SMTP5]                unused
Checking status [SMTPGWIA5.SMTP5]     unused
L8:/home/LCK # rcgrpwise stop SMTPGWIA0.SMTP0
Shutting down                          done
L8:/home/LCK # rcgrpwise start SMTPGWIA0.SMTP0
Starting                                done
L8:/home/LCK #
```

Configuring a POP or IMAP connection ACL entry

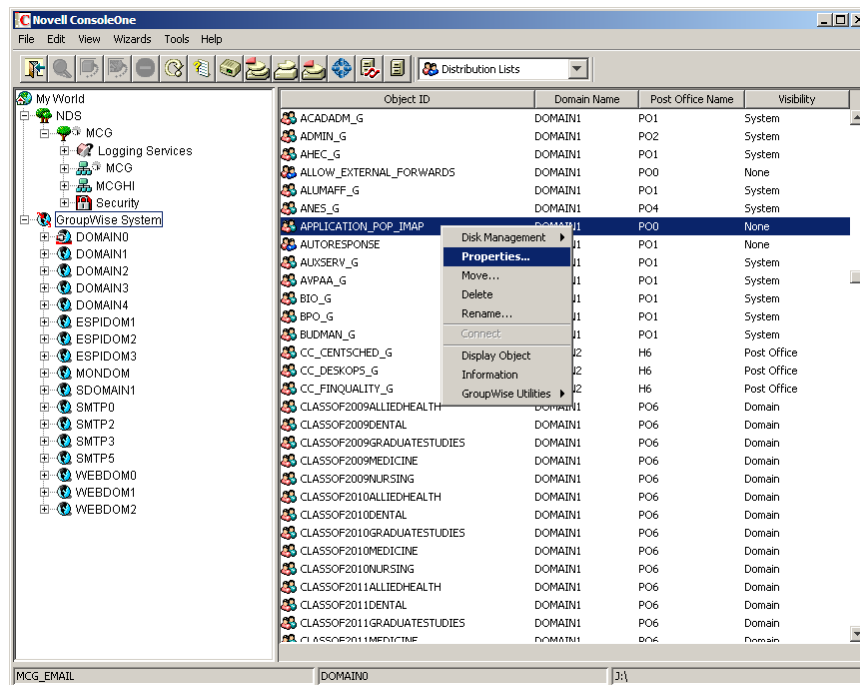
- Using the appropriate version of ConsoleOne and the GroupWise Administration snapins connect to the **DOMAIN0** domain:



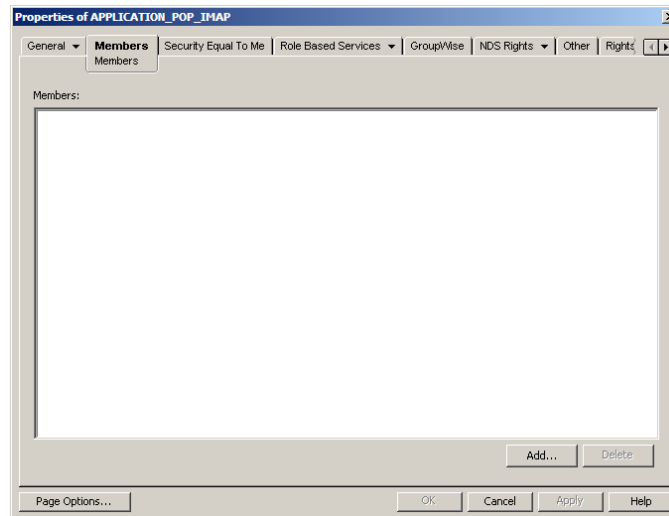
2. Select “**Distribution Lists**” from the object filter dropdown box:



3. Select the “**APPLICATION_POP_IMAP**” Distribution List and edit its properties



4. Select the **"Members"** tab and click the **"Add"** button and browse to and select the ***eDirectory user object(s)*** you want to add to the Distribution list.



Click the **"OK"** button on **"Properties of APPLICATION_POP_IMAP"** dialog

There is no need to restart the SMTPGWIA agent after adding POP or IMAP ACL entries

<End Procedures>